



# NEWSLETTER #24

NOVEMBER 2022

## IN THIS ISSUE:

1. COMMUNITY HOSPITAL ONLINE DISCUSSION GROUPS
2. CALL FOR PAPERS - INTEGRATED CARE IN RURAL, REMOTE, OR ISLAND COMMUNITIES.
3. CHA AT CONFERENCE IN ITALY
4. CHA ABSTRACT PUBLISHED
5. WELLS COMMUNITY HOSPITAL COMMUNITY AWARD
6. NEWS OF COMMUNITY HOSPITALS
7. GROWING OUR CHA NETWORKS
8. FUNDING THE WORK OF THE CHA

## CHA Q Special Interest Group Online Discussion—Wednesday 23rd Nov at 7pm “Creating a Communication Open Door”

Do join us for our next CHA Q Special Interest Group Online Discussion Group on Wed 23rd Nov at 7-8.30pm.



DR SHAUNA FANNIN

Dr Shauna Fannin, GP from Robinson Memorial Hospital, Northern Health and Social Care Trust, Northern Ireland will be giving a moving account of how staff adapted to the changes in communication systems with patients and families during the pandemic. [Case study here.](#)



ROBINSON MEMORIAL HOSPITAL

[Register for the event here.](#)



Led by



Supported by



## Watch Recent Discussion Groups

- ◇ Setting up a 7-day Community Hospital service during the pandemic - Oxford
- ◇ Understanding, and meeting, the needs of all staff during the pandemic, Northumbria
- ◇ Supporting Hospital Discharge During Reset, Teddington Hospital
- ◇ Advanced Clinical Practice Team in Petersfield Hospital, Southern Health
- ◇ Keeping our community safe in Nairn, Highlands



[RECORDINGS  
HERE](#)

## Join Future Discussion Groups—Future discussion groups will include:



- ◇ *Safer Staffing*
- ◇ *Joy in Work*
- ◇ *System Impact of innovations in community hospitals.*

Do [contact us](#) if there is a topic that you would like to be included in these monthly evening online discussion groups.



## Call for Papers - Integrated care in rural, remote, or island communities.

Professor Anne Hendry with her editorial team warmly invite you to submit a research paper, viewpoint, case study or review on a wide range of topics that include:

- \* Role of community hospitals in remote, rural or island communities
- \* Supporting the wellbeing of isolated practitioners
- \* Creating compassionate, inclusive resilient communities

This special issue of the Journal of Integrated Care is entitled:

“Planning, commissioning, delivering and evaluating people centred integrated care in rural, remote, or island communities.”

It will highlight examples of innovation from across the globe. The call for papers opens on 30<sup>th</sup> November. Details are on our website: [here](#)

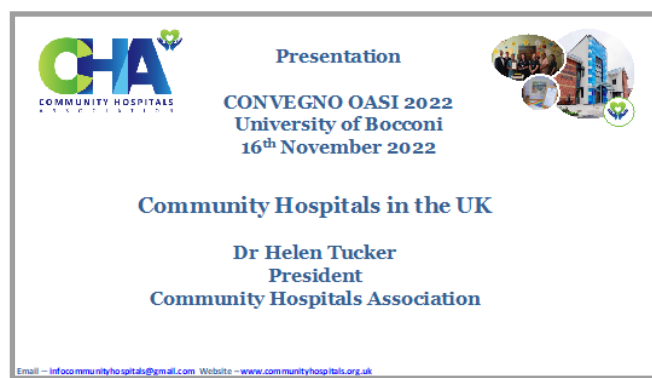


## CHA at Conference in Italy



The CHA is pleased to be working with Professor Giovanni Fattore, Michela Meregaglia and Francesca Meda at the University of Bocconi. Between us we are sharing our knowledge, experience and evidence on community hospitals. Professor Fattore invited the CHA to be represented at the recent annual health service conference in Milan.

At the conference Professor Fattore stressed the value of working together and talked of the important role of the CHA network. The position in Italy is that there is a new strategy with significant investment in 400 community hospitals each with 20 beds and serving a population of 100,000. This new model contrasts with the UK's long history of community hospitals.



Dr Helen Tucker contributed to the conference remotely, and there was some very useful and provocative questioning in the discussions.

We will continue this fruitful relationship, and we hope that Professor Fattore and his team will be able to speak to staff and visit UK community hospitals in the future.

## CHA Abstract Published

We are delighted that our abstract from our presentation to the ICIC22 conference in Denmark has now been published. Details on our website [here](#).



DR DAVID SEAMARK

*"Community hospitals have been described as integrators, and the experience of staff during the pandemic has shown that collaborative working has strengthened over time. Staff have reported that there is a greater appreciation of the role of community hospitals locally within communities and within the wider health and social care system."*

Tucker H, Seamark D, Prodger E, Jay, T., Gibbard, E.

The response of United Kingdom Community Hospitals to the Covid-19 Pandemic: an appreciative Inquiry. International Journal of Integrated Care. 2022;22(S3):221. DOI: [Abstract here](#).



## Wells Community Hospital Community Award

### Winner of BBC Radio Norfolk Make a Difference Award for a Community Group.

Congratulations to everyone involved at Wells Community Hospital Trust in North Norfolk. The hospital is owned and run by local people, and they have been recognised in this award.

All the best to Steve Shaw, Chair of the Hospital Trust. Well done to Simon, Emma and the team and also to all the volunteers.

It really is a valuable service for local people.



## Community Hospitals in the News



Do please visit our website to read about the news of community hospitals across the UK. Hospitals featured include Sheppey community hospital, Wells community hospital, Abingdon community hospital, Launceston Stratton & Helston community hospitals, Ludlow community hospital, Kelso community hospital, Flint Cottage Hospital and Paulton Hospital (pictured). Read more [here](#).

Do share your news with the CHA. We would be pleased to feature your hospital.

## Growing our CHA Community Hospital Networks

If you would like to be a part of our network, then please email Eleanor Murphy, CHA Administrator, who can talk to you about how you can sign up. It is free to join for individuals. [eleanor@communityhospitals.net](mailto:eleanor@communityhospitals.net)

## Funding the work of the CHA

The Committee are all volunteers who are passionate supporters of the work done in and by Community Hospitals. While our running costs are extremely low we rely on organisational membership to fund the work we do. If you are a member of a League of Friends or a Community Hospital with good connections to your League of Friends, please think about whether the membership for that hospital could be funded – details of what to do and cost can be found on our website: [join us](#)

Your small financial contribution can help ensure we can continue to support requests for help from Community Hospitals and Leagues of Friends, provide information for Government departments when requested and continue to advocate for the great work being done in and by Community Hospitals and their teams.

Please do join our growing network. There are many benefits in sharing and learning across community hospitals across the UK.



## CONTACT & SOCIAL MEDIA



[www.communityhospitals.org.uk](http://www.communityhospitals.org.uk)



[@CommHospUK](https://twitter.com/CommHospUK)



[COMMUNITY HOSPITALS ASSOCIATION](https://www.linkedin.com/company/community-hospitals-association)



[Community Hospitals Association | Facebook](https://www.facebook.com/CommunityHospitalsAssociation)



[infocommunityhospitals@gmail.com](mailto:infocommunityhospitals@gmail.com)